

Welcome to Hartland Consolidated Schools



New to the HCS District

Private School

Students looking to transfer to HCS from a private school

Moved to Hartland

Students that have moved into the HCS district

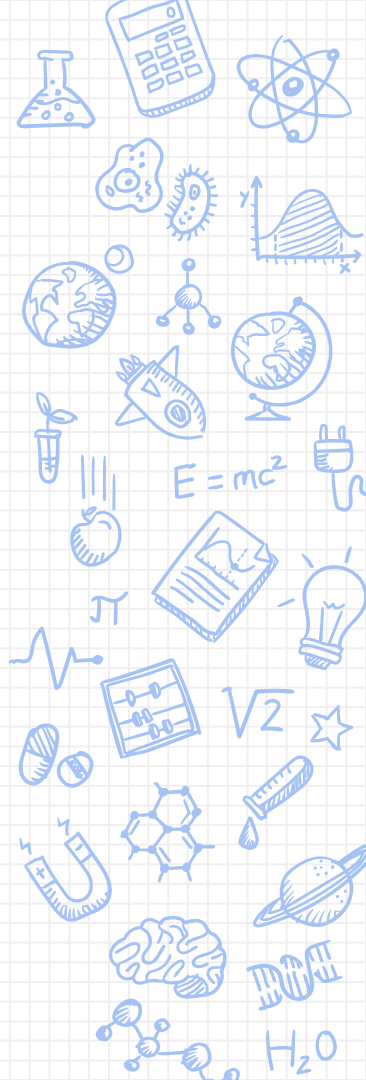
Schools of Choice

Students from a nearby community looking to enroll in HCS



How to Enroll

- **Complete the “New Student Pre-Enrollment”**
 - HHS Website - Counseling - Scheduling - Class of 2025
 - Under the “New Student Information Session”
 - Upload all required documentation electronically
 - Contact the HHS Counseling Office @ 810-626-2225 to confirm enrollment
- **Contact Your Counselor**
 - Answer questions
 - Review course requests



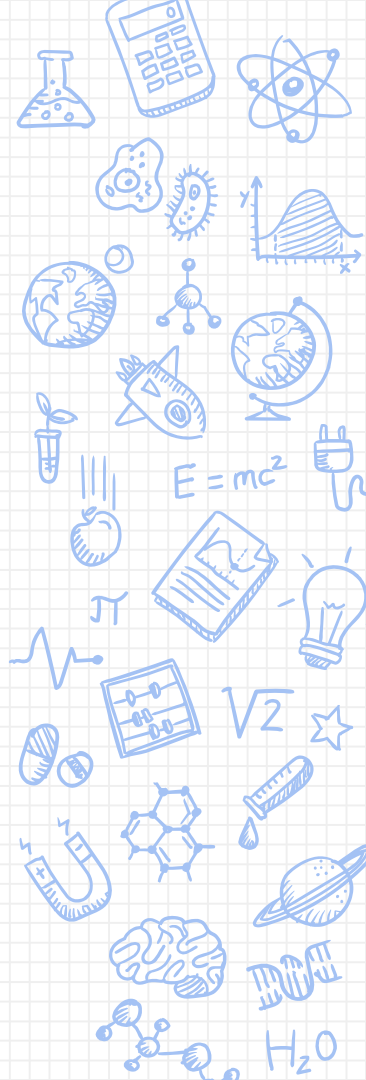
Schools of Choice

- **Application**

- Live outside of the HCS District
- [HHS Website - Counseling - Scheduling - Class of 2025](#)
- Under “New Student Information Session”

- **Schools of Choice Application Window**

- February 1, 2021 through August 6, 2021
- Receive a response within 2-3 weeks



Course Request Sheet

HHS Website - Counseling - Scheduling - Class of 2025

HARTLAND HIGH SCHOOL

9TH Grade Course Request Sheet for 2021-2022

Name _____

1. Get all teacher signatures.
2. Load request into Student Connect. (Do not load alternate requests in the computer).
3. PE and Health can be postponed in favor of band, choir or world languages.
4. To read course descriptions, visit www.hartlandhighschool.us → Counseling → HHS Curriculum Guide.
5. Forms are due to your Math teacher by **Thursday, February 18th**.

SUBJECTS	COURSE SELECTIONS	CREDITS	Teacher Signature (T) when Required (See Back)
Science, Social Studies, and English	These courses have already been entered for you. Biology A & B (1 credit) Global Studies A & B (1 credit) English 9 A & B* (1 credit) <i>*Please see your English teacher to be considered for Honors English 9</i>	3	
Math	44331S Algebra IA 44341S Algebra IB 44351S Geometry A 44361S Geometry B 440710 Honors Geometry (T) 440920 Honors Algebra II/Trig (T)	.5 .5 .5 .5 1 1	(T) _____
World Languages	_____	1	
Electives	46011S PE: Intro to Fitness 46001S Health _____ _____ _____ _____	.5 .5 _____ _____ _____ _____	
	Total Credits Must = 7 Add your credits here: = _____ (7)		

LIST ALTERNATE SELECTIONS BELOW
DO NOT ENTER ALTERNATE COURSES INTO STUDENT CONNECT

RANK	ALTERNATE COURSE NAME	Teacher Signature (T) when Required (See Back)
1 st Choice		
2 nd Choice		
3 rd Choice		
4 th Choice		
5 th Choice		
6 th Choice		

Parent Signature: _____

Student Signature: _____

Student Phone #: _____

Recommendation for Honors Courses

Honors English 9

Application form can be found on the HHS - Counseling - Scheduling - Class of 2025 webpage.

Applications are due by February 18, 2021.

Honors Geometry

A student must have earned an A-/B+ average or higher in Algebra I.

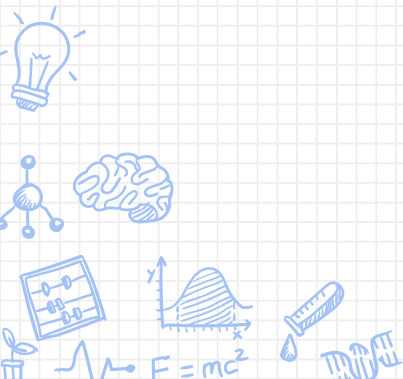
Current math teacher must sign off on the proper math placement.

Honors World Language

Current World Language teacher must sign off on the proper world language placement.

*if not currently enrolled in a world language, your current English teacher can sign off on the appropriate placement





If you have any additional questions, please feel to reach out to your child's prospective counselor as listed below:

A - Dd ♦ Mrs. Andrea Hansen ♦ andrea.hansen@hartlandschools.us ♦ 810.626.2229

De - Ht ♦ Mrs. Heather Osterhout ♦ heather.osterhout@hartlandschools.us ♦ 810.626.2228

Hu - Mn ♦ Mrs. Nicole Lusk ♦ nicole.lusk@hartlandschools.us ♦ 810.626.2224

Mo - Sd ♦ Mrs. Helen Kenney ♦ helen.kenney@hartlandschools.us ♦ 810.626.2239

Se - Z ♦ Mrs. Erica Empie ♦ erica.empie@hartlandschools.us ♦ 810.626.2232

We hope to see you this fall as a
HARTLAND EAGLE!

